

CARES Act

Elementary and Secondary School Emergency Relief (ESSER) Fund

Guidance for

FY20 Title I-A LEAs



Kathy Hoffman

Arizona Superintendent of Public Instruction

MAY 2020



Contents

Introduction from Superintendent Hoffman 1

What is the CARES Act? 2

- Education Stabilization Funds..... 2

Elementary and Secondary School Emergency Relief (ESSER) Fund 3

- **Arizona’s ESSER Fund Award** 3
- **Phases to Recovery (*Relief, Preparation and Prevention, and Recovery*)** 4
- **SEA Activities**..... 4
- **LEA Assistance Funds – FY20 Title I-A LEAs** 5
 - Who is eligible to apply?* 5
 - How are allocations determined?* 5
 - How will eligible LEAs apply for grant funds?* 5
 - What Assurances will apply to LEAs that choose to apply?* 5
 - Are private schools eligible to apply for a grant?*..... 6
 - How long will LEAs have to use these funds?*..... 6
 - What can ESSER grant funds be used for?* 6
 - What can ESSER grant funds not be used for?* 7
 - Arizona ESSER Fund Allocations for FY20 Title I-A LEAs** **8-20**
- **Equitable Services** **21**
 - Who is required to provide equitable services?*..... 21
 - How do you determine if a private school is eligible for equitable services?*..... 21
 - Do private schools need to have participated in FY20 Title I equitable services to be considered eligible for ESSER Fund equitable services?* 22
 - Who is eligible to receive equitable services?* 22
 - What types of services are private schools eligible to receive?* 22
 - How is the scope and delivery of equitable services that a private school can receive determined? Is consultation required?*..... 22
 - What are the requirements for equitable services?*..... 22
 - How is proportionate share determined?* 23
 - How are participating private school budgets for equitable services determined?*..... 23
 - Example: Determining Proportionate Share for ESSER Funds Equitable Services.** **24-25**



CARES Act SEA Waivers..... 26

- Assessment and Accountability Waiver 26
- **Fiscal Waiver** 26
- Fiscal Waiver *Frequently Asked Questions* 27

Additional US Department of Education COVID-19 Flexibilities for Federal Grantees . 28

- Repurposing Federal Equipment and Supplies to Combat COVID-19..... 28
- ESSA Existing Transferability Flexibility 29

Appendices

- **FY21 Affirmation of Timely/Meaningful Ongoing Consultation and Equitable Services**
- CARES Act: *Elementary and Secondary School Emergency Relief Fund*

U.S. Department of Education ESSER Fund Resources

- [Frequently Asked Questions about the Elementary and Secondary School Emergency Relief Fund \(ESSER Fund\)](#)
- [Fact Sheet for Repurposing Federal Equipment and Supplies to Combat COVID-19](#)
- [Fact Sheet for Transferring State-and Local-Level Funds \(Section 5103 of the ESEA\)](#)
- [Providing Equitable Services to Students and Teachers in Non-Public Schools Under the CARES Act Programs](#)

For questions on the **ESSER Fund**, please reach out to the Arizona Department of Education (ADE) by emailing:
ESSER@azed.gov

For **general questions** on the CARES Act, please reach out by emailing:
Questions@azed.gov



Arizona Department of Education
Office of the State Superintendent

Dear School Leaders,

The 2019-2020 school year presented our education community with unprecedented challenges. Yet, despite these challenges, our schools and educators did an amazing job finding creative ways to support students and families. While there are still many unknowns about the future of this virus and its impact on our state, the Arizona Department of Education (ADE) remains committed to providing the field with as much guidance, support, and clarity as possible.

To continue to support schools, ADE's framework for the Elementary and Secondary School Emergency Relief (ESSER) Fund provides a comprehensive and equitable approach to support Arizona's students, families, teachers and schools that have been impacted by COVID-19.

We will continue to collaborate closely with the Governor's Office, state, regional and local partners, and initiatives to further support statewide relief and recovery efforts. Our primary areas of focus include support for re-opening schools, online and remote learning opportunities and infrastructure, mental health and social wellness supports and resources for addressing student learning gaps.

These focus areas will be addressed through three distinct phases of time (**Relief, Preparation and Prevention** and **Recovery**) needed for overall recovery and stabilization, and these areas of focus and phases align with guidance to LEAs on frameworks and activities for their consideration in how they can leverage these federal recovery funds to address the unique needs of their school communities.

Thank you again for all you are doing to support your students, staff and community through this challenging time! The Arizona Department of Education is grateful for your continued leadership and care for our communities. We look forward to continuing to support you all through this recovery process.

Best,

A handwritten signature in black ink that reads "Kathy Hoffman".

Kathy Hoffman, MS, CCC-SLP
Superintendent of Public Instruction
Arizona Department of Education



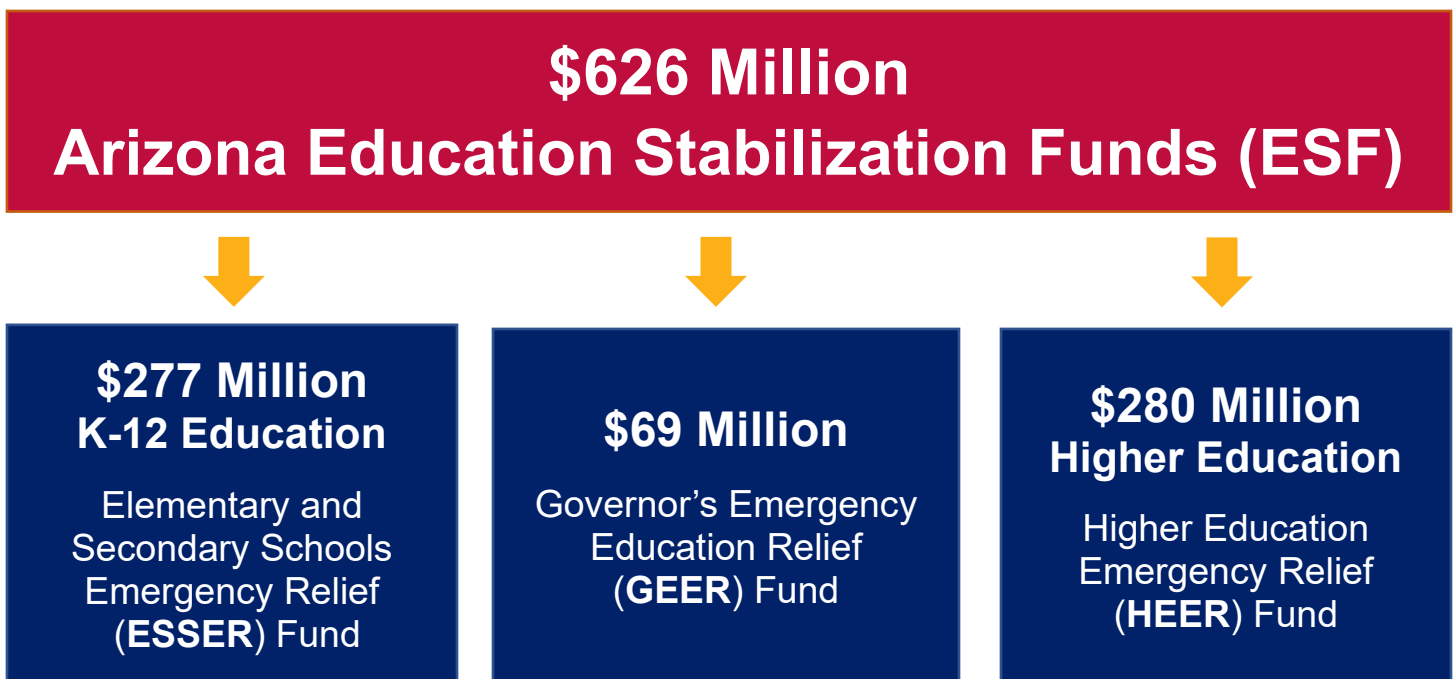
What is the CARES Act?

The **Coronavirus Aid, Relief and Economic Security (CARES) Act** is a \$2 trillion relief package that included \$180 billion to be distributed among two funds dedicated to State, Local, and Tribal governments

The **Education Stabilization Fund (ESF)** provides \$30.74 billion in dedicated funds to support education relief and recovery efforts, with:

- \$13.5 billion for K-12;
- \$14.2 billion for Higher Education; and,
- \$3 billion for Governors to further support a state’s most significantly impacted K-12 and Higher Education institutions.

Arizona is projected to receive **\$626 million** in **Education Stabilization Funds**:



The Arizona Department of Education (ADE) will administer the ESSER Fund, and advise the Governor regarding the distribution of a portion of GEER Funds to support K-12 LEAs that have been significantly impacted by COVID-19.



**\$277 Million
K-12 Education**

Elementary and
Secondary Schools
Emergency Relief
(ESSER) Fund

The **Elementary and Secondary School Emergency Relief (ESSER) Fund** is designated to support K-12 schools to respond to the COVID-19 pandemic and the declaration of statewide school closures. The Arizona Department of Education (ADE) will administer this fund.

Arizona’s award is based on the proportionate share of Title I-A funds received in FY20 (SY19-20):

- **90%** of Arizona’s award (**\$249 million**) must be **sub-granted to LEAs**. Funds are allocated based on each LEA’s **proportionate share of Title I-A funds received in FY20 (SY19-20)**.
- **9.5%** of the total award may be reserved for ADE **state-level activities** to support K-12 **relief, prevention and preparation, and recovery** efforts
- No more than **0.5%** of the total award may be reserved by ADE for **administrative costs**

The following is a breakdown of Arizona’s ESSER Fund award:

Total Award	\$ 277,422,944
Total SEA Admin (0.5%)	\$ 1,387,115
Total SEA Activities (9.5%)	\$ 26,355,179
Total LEA Assistance (90%)	\$ 249,680,650




Initial Project Term: March 13, 2020 – September 30, 2021

Funds will remain available for obligation through **September 30, 2022**



Phases to Recovery

ADE encourages a **three-phase approach** to plan to leverage ESSER Funds to respond to state and local needs in relation to COVID-19:

 <p>Relief</p>	 <p>Preparation & Prevention</p>	 <p>Recovery</p>
<p>March 13 – May 30, 2020</p> <p>Meeting immediate needs and managing school closures and planning for summer school</p>	<p>June 1 – August 30, 2020</p> <p>Addressing and stabilizing disruption and preparing for safe school openings, as well as a future health disruptions</p>	<p>September 1, 2020 - September 30, 2021</p> <p>Managing on-going recovery needs of students and schools, and reimagining safe learning environments</p>

A ***Roadmap for Reopening Schools***, developed through the efforts of a statewide stakeholders advisory group, will be released in **May 2020** with strategies and considerations to, in part, help inform LEA planning for the use of CARES funds across these phases

ADE SEA ESSER Fund Activities (\$26 million)

ADE’s SEA ESSER Funds will focus on **supporting students, families, educators, and leaders** to enhance **K-12 COVID-19 relief, prevention and preparation, and recovery efforts statewide**. Emphasis will be placed on areas most significantly impacted by COVID-19 – including Tribal Communities, rural and remote schools.

ADE will **collaborate with the Governor’s Office and other state, regional and local partners and initiatives** to further support efforts to identify areas that can be enhanced or expanded through targeted use of ESSER Funds. This will include **support for online and distance learning** improving broadband access for students and staff in significantly impacted LEAs.



ESSER LEA Assistance Funds for FY20 Title I-A LEAs

Who is eligible to apply?

LEAs must have received Title I-A funds in FY20 (SY19-20) to be eligible to apply for an ESSER Fund grant. There are currently **496 total projected eligible LEAs**, representing approximately 1,772 schools and 1,037,228 students. Eligible LEAs also include Title I-A FY21 New and Expanding Charter LEAs.

How are allocations determined?

Funds are allocated from the **90% set aside for LEA Assistance**, based on each LEA's proportionate share of Title I-A funds received in FY20 (SY19-20). Projected data for FY21 New and Expanding Charter LEAs were calculated per U.S. Department of Education's guidance.

Additional funds have been provided from the **SEA Activities set-aside** to the eligible Title I LEA cohort. These additional funds will also help to ensure that all LEAs receive a minimum ESSER Fund allocation of at least \$50,000.

The following is the methodology used to provide these additional funds:

- Determine a per-pupil amount (PPA) based on 50% of the state FY20 Total Final Adjusted Poverty for the eligible Title I Cohort (*Total for LEA Assistance / Total Adjusted Poverty*)
- Ensure all LEA allocations meet the 50% PPA as applied to their final adjusted poverty count
- Ensure a **minimum allocation of \$50,000 (~26% of LEAs)**

How will eligible LEAs apply for grant funds?

Eligible LEAs will apply for ESSER grant funds through completing an online application in the ADE Grants Management system.

What Assurances will apply to LEAs that choose to apply?

LEAs must make the following assurances in order to receive ESSER funds:

Assistance to Non-Public Schools

LEAs must provide equitable services in the same manner as required under Title I-A (ESEA Sec.1117). A **proportionate share** of funds to support equitable services must be calculated, and **timely and meaningful consultation** with non-public schools must be completed

Public Control of Funds

Just as required under Title I-A, LEAs must maintain control of all ESSER Funds for services and assistance provided to non-public schools associated with the provision of equitable services

Continued Payment to Employees

LEAs shall, to the greatest extent practicable, continue to pay its employees and contractors during the period of any disruptions or closures related to coronavirus.

NOTE: USED will provide additional guidance to address if ESSER Funds may be used by LEAs to help meet this assurance. An allowable LEA use of ESSER Funds are "*other activities that are necessary to maintain the operation of and continuity of services in local educational agencies and continuing to employ existing staff of the local educational agency.*"



Are private schools eligible to apply for a grant?

No. Non-profit private schools are, however, eligible to receive equitable services through the ESSER Fund grant, as determined by timely and meaningful consultation. All students and teachers in private schools can benefit from equitable services, and the potential scope of services would be any activity allowable under the ESSER Fund. For-profit private schools are not eligible to participate in equitable services.

How will eligible LEAs apply for a grant?

LEAs will apply for grant funds through the ADE Grants Management system.

How long will LEAs have to use these funds?

LEAs will complete an application in the Grants Management system with an initial project/budget term of **March 13, 2020 – September 30, 2021**. However, funds obligated by LEAs will remain available for continued obligation through carryover through **September 30, 2022**

What can ESSER grant funds be used for?

ESSER Funds are **flexible**, and may be used by LEAs for **any of the following categories depending on local needs**:

- **Any activity allowed under the Every Student Succeeds Act (ESSA) – eg:** *Title I-A, Title I-C (Migrant Education), Title I-D (Neglected and Delinquent Students), Title II-A, Title III-A (English Language Learners), Title IV-A, Title IV-B 21st Century Community Learning Centers, Title V-B REAP (SRSA and RLIS), Title VI-A (Indian Education), Title VII (Impact Aid)*
- **Any activity allowed under the following Federal education acts:**
 - **Individuals with Disabilities Education Act (IDEA)**
 - **Carl D. Perkins Career and Technical Education Act (Perkins Act)**
 - **McKinney Vento Homeless Assistance Act**
 - **Adult Education and Family Literacy Act**
 - **Native Hawaiian Education Act and the Alaska Native Educational Equity, Support, and Assistance Act**
- ESSER Funds may also be used by LEAs for any of the following **COVID-19 related relief, prevention and recovery efforts**:
 - **Coordination of preparedness and response** efforts of local educational agencies with State, local, Tribal, and territorial public health departments, and other relevant agencies, to improve coordinated responses among such entities to prevent, prepare for, and respond to coronavirus
 - Providing principals and others school leaders with the resources necessary to address the **needs of individual schools**
 - Activities to **address the unique needs** of low-income children or students, children with disabilities, English learners, racial and ethnic minorities, students experiencing homelessness, and foster care youth, including how **outreach and service delivery** will meet the needs of each population



- Developing and implementing procedures and systems to **improve the preparedness and response efforts** of LEAs
- **Training and professional development** for staff of the LEA on sanitation and minimizing the spread of infectious diseases
- **Purchasing supplies to sanitize and clean** the facilities of an LEA, including buildings operated by such agency
- **Planning for and coordinating during long term closures**, including meals to eligible students, technology for online learning, guidance for carrying out requirements under the Individuals with Disabilities Education Act (IDEA), and how to ensure other educational services can continue to be provided consistent with all Federal, State, and local requirements
- **Purchasing educational technology** (including hardware, software, and connectivity) for students that aids in regular and substantive educational interaction between students and their classroom instructors, including low-income students and students with disabilities, which may include assistive technology or adaptive equipment
- **Providing mental health services and supports**
- **Planning and implementing activities related to summer learning and supplemental after school programs**, including providing classroom instruction or online learning during the summer months and addressing the needs of low-income students, students with disabilities, English learners, migrant students, students experiencing homelessness, and children in foster care
- **Other activities that are necessary to maintain the operation of and continuity of services** in local educational agencies and continuing to employ existing staff of the local educational agency

What can ESSER grant funds not be used for?

The following are *unallowable* uses of ESSER Funds:

- CARES Act funds generally cannot be used for bonuses, merit pay, or similar expenditures, unless related to disruptions or closures resulting from COVID-19
- Subsidizing or offsetting executive salaries and benefits of individuals who are not employees of the SEA or LEAs
- Expenditures related to state or local teacher or faculty unions or associations



Arizona Elementary and Secondary School Emergency Relief (ESSER) Fund Allocations

The following ESSER Fund allocations are based on the projected final eligible LEA cohort:

Entity ID	CTDS	LEA NAME	Total Initial ESSER Fund Allocation
1000166	118720000	A+ Charter Schools	\$68,016.95
85540	088704000	Academy of Building Industries Inc.	\$50,000.00
79961	108713000	Academy of Mathematics and Science Inc.	\$166,454.47
90878	078242000	Academy of Mathematics and Science South, Inc.	\$1,936,851.39
92768	078270000	Academy of Mathematics and Science, Inc.	\$397,500.57
78897	108665000	Academy of Tucson Schools	\$135,021.92
79213	078794000	Academy with Community Partners Inc	\$50,000.00
6364	108767000	Accelerated Elementary and Secondary Schools	\$50,000.00
4325	078701000	Acclaim Charter School	\$148,276.06
79437	138760000	Acorn Montessori Charter School	\$102,395.78
4289	070516000	Agua Fria Union High School District	\$544,425.98
4249	070363000	Aguila Elementary District	\$70,330.03
79053	078793000	AIBT Non-Profit Charter High School - Phoenix	\$87,354.47
4409	100215000	Ajo Unified District	\$112,445.75
5978	118705000	Akimel O Otham Pee Posh Charter School Inc.	\$50,000.00
78966	118706000	Akimel O'Otham Pee Posh Charter School Inc.	\$50,000.00
4280	070468000	Alhambra Elementary District	\$6,507,560.37
79969	078967000	All Aboard Charter School	\$50,000.00
4418	100351000	Altar Valley Elementary District	\$281,591.46
80995	108794000	American Charter Schools Foundation d.b.a. Alta Vista High S	\$192,408.68
79883	118703000	American Charter Schools Foundation d.b.a. Apache Trail High	\$58,160.76
79874	078950000	American Charter Schools Foundation d.b.a. Crestview College	\$82,339.38
79872	078947000	American Charter Schools Foundation d.b.a. Desert Hills High	\$50,000.00
79873	078948000	American Charter Schools Foundation d.b.a. Estrella High Sch	\$78,782.77
79875	078951000	American Charter Schools Foundation d.b.a. Peoria Accelerate	\$118,634.19
80989	078983000	American Charter Schools Foundation d.b.a. South Pointe High	\$167,417.53
88334	078517000	American Charter Schools Foundation d.b.a. South Ridge High	\$138,537.79
79877	078953000	American Charter Schools Foundation d.b.a. Sun Valley High S	\$129,951.93
79879	078956000	American Charter Schools Foundation d.b.a. West Phoenix High	\$132,293.53
6365	138754000	American Heritage Academy	\$92,445.92
4348	078725000	American Leadership Academy, Inc.	\$824,359.97
4406	100210000	Amphitheater Unified District	\$3,173,678.01
4506	140550000	Antelope Union High School District	\$82,898.11

CARES Act – Education Stabilization Funds



90532	078525000	Anthem Preparatory Academy	\$50,000.00
4443	110243000	Apache Junction Unified District	\$1,289,942.00
79426	108785000	Aprender Tucson	\$121,262.05
92312	078247000	Archway Classical Academy Arete	\$50,000.00
90917	078597000	Archway Classical Academy Chandler	\$50,000.00
92314	078248000	Archway Classical Academy Cicero	\$50,000.00
91878	078406000	Archway Classical Academy Glendale	\$50,000.00
92656	078234000	Archway Classical Academy Lincoln	\$50,000.00
91758	078214000	Archway Classical Academy North Phoenix	\$50,000.00
92704	078266000	Archway Classical Academy Trivium East	\$50,000.00
90915	078595000	Archway Classical Academy Trivium West	\$50,000.00
90916	078596000	Archway Classical Academy Veritas	\$50,000.00
89486	078527000	Arete Preparatory Academy	\$50,000.00
85816	078993000	Arizona Agribusiness & Equine Center Inc	\$122,146.59
90779	078587000	Arizona Agribusiness & Equine Center Inc	\$76,095.11
4331	078707000	Arizona Agribusiness & Equine Center Inc.	\$50,000.00
87403	078510000	Arizona Agribusiness & Equine Center Inc.	\$50,000.00
91131	138785000	Arizona Agribusiness & Equine Center, Inc.	\$50,000.00
91958	078226000	Arizona Autism Charter Schools	\$57,752.58
4346	078723000	Arizona Call-a-Teen Youth Resources Inc.	\$50,000.00
79947	108709000	Arizona Community Development Corporation	\$767,340.92
87407	078511000	Arizona Connections Academy Charter School Inc.	\$364,918.84
85749	078991000	Arizona Montessori Charter School at Anthem	\$50,000.00
4274	070447000	Arlington Elementary District	\$93,072.24
4187	020453000	Ash Creek Elementary District	\$50,000.00
4471	130231000	Ash Fork Joint Unified District	\$50,878.80
346763	078277000	ASU Preparatory – South Phoenix High School	\$53,429.75
90273	078559000	ASU Preparatory – South Phoenix Intermediate	\$74,005.51
92716	078267000	ASU Preparatory – South Phoenix Primary	\$74,924.32
89949	078546000	ASU Preparatory Academy - Phoenix Elementary	\$151,210.79
91303	078207000	ASU Preparatory Academy - Phoenix High School	\$103,917.62
92325	078250000	ASU Preparatory Academy- Phoenix Middle School	\$106,609.63
4272	070444000	Avondale Elementary District	\$1,149,022.62
89869	078542000	AZ Compass Schools Inc.	\$69,850.84
4508	148757000	Az-Tec High School	\$50,000.00
4412	100240000	Baboquivari Unified School District #40	\$950,321.31
4468	130220000	Bagdad Unified District	\$50,000.00
79204	078988000	Ball Charter Schools (Dobson)	\$70,840.60
4294	078987000	Ball Charter Schools (Hearn)	\$168,360.65
90885	078586000	Ball Charter Schools (Val Vista)	\$50,000.00
4268	070431000	Balsz Elementary District	\$1,649,049.88

CARES Act – Education Stabilization Funds



549803	078282000	BASIS Schools, Inc.	\$55,914.67
4481	130326000	Beaver Creek Elementary District	\$80,683.30
79983	078972000	Bell Canyon Charter School Inc	\$102,633.25
79226	020209000	Benson Unified School District	\$305,476.23
4515	150576000	Bicentennial Union High School District	\$79,990.15
4169	020202000	Bisbee Unified District	\$271,749.08
4397	090232000	Blue Ridge Unified District	\$579,445.03
81041	078745000	Blueprint Education	\$74,936.17
4224	050316000	Bonita Elementary District	\$50,000.00
4513	150426000	Bouse Elementary District	\$50,000.00
4171	020214000	Bowie Unified District	\$50,000.00
4305	078613000	Boys & Girls Clubs of the East Valley dba Mesa Arts Academy	\$85,120.69
4269	070433000	Buckeye Elementary District	\$822,290.92
4284	070501000	Buckeye Union High School District	\$387,979.77
4378	080415000	Bullhead City School District	\$1,117,842.73
90328	078565000	CAFA Inc. dba Learning Foundation and Performing Arts Alta	\$76,798.90
90327	078564000	CAFA Inc. dba Learning Foundation and Performing Arts Gilbe	\$126,570.24
79971	098749000	CAFA Inc. dba Learning Foundation Performing Arts School	\$72,152.03
79055	078909000	Calibre Academy	\$137,285.28
79905	078959000	Camelback Education, Inc	\$189,373.19
4470	130228000	Camp Verde Unified District	\$383,032.09
4484	130350000	Canon Elementary District	\$84,609.79
4400	098745000	Career Development Inc.	\$50,000.00
79047	078524000	Career Success Schools	\$184,032.45
80001	148761000	Carpe Diem Collegiate High School	\$50,000.00
4282	070483000	Cartwright Elementary District	\$7,999,141.31
91934	078218000	CASA Academy	\$72,744.89
4446	110404000	Casa Grande Elementary District	\$1,718,113.97
4453	110502000	Casa Grande Union High School District	\$740,635.43
4410	100216000	Catalina Foothills Unified District	\$169,317.62
4244	070293000	Cave Creek Unified District	\$303,170.33
4395	090225000	Cedar Unified District	\$661,536.04
4191	028750000	Center for Academic Success Inc.	\$584,717.55
90140	078550000	Challenge Foundation Academies of Arizona Inc.	\$240,412.72
6362	078772000	Challenge School Inc.	\$50,000.00
88299	078515000	Chandler Preparatory Academy	\$50,000.00
4242	070280000	Chandler Unified District #80	\$3,276,351.66
4158	010224000	Chinle Unified District	\$2,311,140.03
4474	130251000	Chino Valley Unified District	\$436,189.06
5186	078995000	Cholla Academy	\$200,199.94
92316	078249000	Cicero Preparatory Academy	\$50,000.00

CARES Act – Education Stabilization Funds



85448	108720000	CITY Center for Collaborative Learning	\$67,033.43
4486	130403000	Clarkdale-Jerome Elementary District	\$50,000.00
81027	028701000	Cochise Community Development Corporation	\$99,406.15
4370	080214000	Colorado City Unified District	\$752,457.72
4381	080502000	Colorado River Union High School District	\$461,574.07
79467	108788000	Compass High School Inc.	\$104,615.44
4160	010306000	Concho Elementary District	\$102,013.88
4479	130317000	Congress Elementary District	\$50,000.00
4416	100339000	Continental Elementary District	\$50,000.00
4442	110221000	Coolidge Unified District	\$1,301,824.05
79988	078975000	Cortez Park Charter Middle School Inc.	\$101,852.72
4487	130406000	Cottonwood-Oak Creek Elementary District	\$401,608.49
79074	078513000	Country Gardens Charter Schools	\$135,025.39
90331	108505000	CPLC Community Schools dba Hiaki High School	\$50,000.00
80032	108793000	CPLC Community Schools dba Toltecalli High School	\$50,000.00
4501	140413000	Crane Elementary District	\$1,195,318.52
92369	078253000	Create Academy	\$51,118.05
4263	070414000	Creighton Elementary District	\$3,317,717.18
89917	078544000	Daisy Education Corporation dba Paragon Science Academy	\$92,486.32
79049	108666000	Daisy Education Corporation dba Sonoran Science Academy	\$130,090.17
89914	108502000	Daisy Education Corporation dba Sonoran Science Academy - Ph	\$171,516.85
90541	078577000	Daisy Education Corporation dba. Sonoran Science Academy Peoria	\$95,538.89
4246	070297000	Deer Valley Unified District	\$3,656,154.10
81099	078621000	Desert Heights Charter Schools	\$124,878.46
92302	088705000	Desert Star Academy	\$96,742.46
88321	138714000	Desert Star Community School, Inc.	\$50,000.00
6258	048701000	Destiny School Inc.	\$109,281.16
6357	058703000	Discovery Plus Academy	\$50,000.00
4179	020345000	Double Adobe Elementary District	\$50,000.00
4174	020227000	Douglas Unified District	\$1,912,733.71
4228	060202000	Duncan Unified District	\$91,657.74
4243	070289000	Dysart Unified District	\$3,914,351.21
91170	078202000	EAGLE College Prep II Inc. dba EAGLE College Prep Harmony	\$103,466.25
89850	078541000	EAGLE South Mountain Charter Inc.	\$150,572.95
91939	078223000	Eagle South Mountain Charter, Inc.	\$77,652.90
91938	078222000	Eagle South Mountain Charter, Inc.	\$129,951.93
87401	078509000	East Mesa Charter Elementary School Inc.	\$170,929.93
90506	108506000	Ed Ahead	\$50,000.00
4421	108653000	Edge School Inc. The	\$57,065.30
743644	078573000	Edison Project	\$50,000.00
79981	078971000	Edkey Inc. - AZ Conservatory for Arts and Academics	\$86,242.05

CARES Act – Education Stabilization Funds



81045	078742000	Edkey Inc. - Pathfinder Academy	\$78,589.97
81043	078740000	Edkey Inc. - Redwood Academy	\$98,787.08
6446	078915000	Edkey Inc. - Sequoia Charter School	\$349,474.04
81052	138705000	Edkey Inc. - Sequoia Ranch School	\$324,708.37
79211	078917000	Edkey Inc. - Sequoia Village School	\$157,660.87
92226	078246000	Edkey, Inc. - Pathway Academy	\$200,773.54
4329	078705000	Edkey, Inc. - Sequoia Choice Schools	\$100,291.66
81123	108717000	Educational Impact, Inc.	\$63,061.67
90201	078558000	Educational Options Foundation	\$58,399.02
4341	078717000	EduPreneurship Inc.	\$50,000.00
79059	078911000	E-Institute Charter Schools Inc.	\$108,877.52
4185	020412000	Elfrida Elementary District	\$50,000.00
4448	110411000	Eloy Elementary District	\$454,552.62
91277	078401000	Empower College Prep	\$365,813.05
92250	078103000	Espiritu Community Development Corp.	\$225,567.28
4335	078711000	Espiritu Community Development Corp.	\$217,622.77
92902	078275000	Espiritu Schools	\$50,000.00
92988	078239000	Estrella Education Foundation	\$50,000.00
92379	078254000	Ethos Academy - A Challenge Foundation Academy	\$113,563.49
79214	078901000	Excalibur Charter Schools Inc.	\$109,326.82
78783	078785000	Fit Kids Inc. dba Champion Schools	\$481,192.01
4207	038752000	Flagstaff Junior Academy	\$50,000.00
4192	030201000	Flagstaff Unified District	\$1,571,344.58
4300	078608000	Florence Crittenton Services of Arizona Inc.	\$50,000.00
4437	110201000	Florence Unified School District	\$1,591,119.78
4405	100208000	Flowing Wells Unified District	\$1,261,038.47
4167	020100000	Fort Huachuca Accommodation District	\$67,144.41
4221	050207000	Fort Thomas Unified District	\$422,959.45
4356	078755000	Fountain Hills Charter	\$50,000.00
4247	070298000	Fountain Hills Unified District	\$116,228.80
4273	070445000	Fowler Elementary District	\$1,634,421.24
4495	138751000	Franklin Phonetic Primary School Inc.	\$98,039.03
92596	078263000	Franklin Phonetic Primary School, Inc.	\$50,000.00
4195	030206000	Fredonia-Moccasin Unified District	\$58,391.59
89506	078528000	Freedom Academy, Inc.	\$50,000.00
4303	078611000	Friendly House Inc.	\$151,047.60
4505	140432000	Gadsden Elementary District	\$1,305,353.14
4157	010220000	Ganado Unified School District	\$739,783.63
6372	078774000	Gem Charter School Inc.	\$50,000.00
4332	078708000	Genesis Program Inc.	\$50,000.00
90884	078585000	George Gervin Youth Center, Inc.	\$96,135.62

CARES Act – Education Stabilization Funds



4238	070224000	Gila Bend Unified District	\$125,053.04
4239	070241000	Gilbert Unified District	\$2,361,129.01
4271	070440000	Glendale Elementary District	\$4,804,642.37
4285	070505000	Glendale Union High School District	\$4,163,991.22
4208	040201000	Globe Unified District	\$341,481.34
4194	030204000	Grand Canyon Unified District	\$50,000.00
10974	108770000	Great Expectations Academy	\$50,000.00
79500	108789000	Griffin Foundation Inc. The	\$126,548.50
6369	108726000	Ha:san Educational Services	\$50,000.00
4371	080303000	Hackberry School District	\$50,000.00
79501	148760000	Harvest Power Community Development Group Inc.	\$459,064.33
4212	040241000	Hayden-Winkelman Unified District	\$71,849.79
4392	090206000	Heber-Overgaard Unified District	\$118,128.99
81076	078985000	Heritage Elementary School	\$290,545.01
79061	108775000	Highland Free School	\$50,000.00
92982	078244000	Highland Prep	\$72,991.96
4248	070260000	Higley Unified School District	\$657,025.90
91275	078204000	Hirsch Academy A Challenge Foundation	\$65,163.53
4389	090203000	Holbrook Unified District	\$731,535.54
4469	130222000	Humboldt Unified District	\$1,166,388.53
4502	140416000	Hyder Elementary District	\$50,000.00
89784	078535000	Imagine Avondale Elementary Inc.	\$211,907.95
90162	078553000	Imagine Avondale Middle Inc.	\$74,924.32
89561	078531000	Imagine Camelback Middle Inc.	\$76,875.64
88365	078519000	Imagine Charter Elementary at Camelback Inc.	\$166,433.14
88367	078520000	Imagine Charter Elementary at Desert West Inc.	\$298,156.91
89786	078536000	Imagine Coolidge Elementary Inc.	\$241,568.22
89563	078532000	Imagine Desert West Middle Inc.	\$160,392.73
88369	078521000	Imagine Middle at East Mesa Inc.	\$50,000.00
88372	078522000	Imagine Middle at Surprise Inc.	\$57,764.49
90034	078547000	Imagine Prep Coolidge Inc.	\$161,563.54
89788	078537000	Imagine Prep Superstition Inc.	\$88,583.65
89790	078538000	Imagine Prep Surprise Inc.	\$53,459.64
90160	078552000	Imagine Superstition Middle Inc.	\$50,000.00
91326	078210000	Incito Schools	\$82,173.19
90876	108735000	Institute for Transformative Education Inc.	\$50,000.00
5174	078751000	Integrity Education Incorporated	\$50,000.00
4352	078741000	Intelli-School, Inc.	\$50,000.00
4259	070405000	Isaac Elementary District	\$3,839,593.72
4445	110244000	J O Combs Unified School District	\$793,456.28
79475	078928000	James Sandoval Preparatory High School	\$50,000.00

CARES Act – Education Stabilization Funds



4388	090202000	Joseph City Unified District	\$142,995.07
79064	148759000	Juniper Tree Academy	\$128,787.91
92989	128704000	Kaizen Education Foundation - Colegio Petite Arizona	\$52,253.86
91329	078240000	Kaizen Education Foundation dba Advance U	\$50,000.00
91328	078230000	Kaizen Education Foundation dba Discover U Elementary School	\$58,012.88
4342	078718000	Kaizen Education Foundation dba El Dorado High School	\$129,638.74
90333	078570000	Kaizen Education Foundation dba Gilbert Arts Academy	\$50,000.00
90535	078580000	Kaizen Education Foundation dba Havasu Preparatory Academy	\$69,070.31
90334	078571000	Kaizen Education Foundation dba Liberty Arts Academy	\$74,803.61
79882	078949000	Kaizen Education Foundation dba Maya High School	\$126,049.26
90548	078576000	Kaizen Education Foundation dba Mission Heights Preparatory	\$68,680.05
79880	108706000	Kaizen Education Foundation dba Skyview High School	\$50,000.00
79233	078999000	Kaizen Education Foundation dba South Pointe Elementary Scho	\$125,104.61
78965	078765000	Kaizen Education Foundation dba South Pointe Junior High Sch	\$84,985.64
79876	078952000	Kaizen Education Foundation dba Summit High School	\$96,388.98
79878	078954000	Kaizen Education Foundation dba Tempe Accelerated High Schoo	\$50,000.00
90330	078567000	Kaizen Education Foundation dba Vista Grove Preparatory Acad	\$118,069.50
79871	078946000	Kaizen Education Foundation dba Vista Grove Preparatory Acad	\$50,000.00
4396	090227000	Kayenta Unified District	\$1,189,663.56
4383	088620000	Kingman Academy Of Learning	\$171,891.13
79598	080220000	Kingman Unified School District	\$1,643,832.54
4480	130323000	Kirkland Elementary District	\$50,000.00
4267	070428000	Kyrene Elementary District	\$955,391.27
90900	138503000	La Tierra Community School Inc	\$50,000.00
4368	080201000	Lake Havasu Unified District	\$952,908.99
4276	070459000	Laveen Elementary District	\$1,124,239.55
79967	078968000	LEAD Charter Schools	\$113,755.39
91174	078101000	LEAD Charter Schools dba Leading Edge Academy Queen Creek	\$79,217.25
90637	118708000	Leading Edge Academy Maricopa	\$169,168.42
87349	078507000	Legacy Education Group	\$50,000.00
92610	118715000	Legacy Traditional Charter School	\$110,247.87
92199	118718000	Legacy Traditional Charter School - Casa Grande	\$217,863.22
92047	078229000	Legacy Traditional Charter School - Gilbert	\$81,369.02
88360	118719000	Legacy Traditional Charter School “ Maricopa	\$126,616.53
91763	078215000	Legacy Traditional Charter School-Laveen Village	\$247,422.22
91133	078417000	Legacy Traditional School – Chandler	\$61,568.87
850100	078408000	Legacy Traditional School - Glendale	\$167,807.80
1000283	078635000	Legacy Traditional School - Goodyear	\$84,842.90
850101	078409000	Legacy Traditional School - North Chandler	\$134,635.13
1000568	078637000	Legacy Traditional School - North Phoenix	\$84,049.69
850099	078407000	Legacy Traditional School - Peoria	\$56,200.89

CARES Act – Education Stabilization Funds



92879	078274000	Legacy Traditional School - Surprise	\$154,330.27
1000560	078636000	Legacy Traditional School - West Surprise	\$50,000.00
91137	108414000	Legacy Traditional School- Northwest Tucson	\$143,225.21
91135	078416000	Legacy Traditional School-Avondale	\$240,404.19
834265	078413000	Legacy Traditional School-East Mesa	\$50,000.00
873957	078415000	Legacy Traditional School-Phoenix	\$280,204.63
4266	070425000	Liberty Elementary District	\$340,990.39
10968	078784000	Liberty Traditional Charter School	\$192,924.80
92657	078235000	Lincoln Preparatory Academy	\$50,000.00
4281	070479000	Litchfield Elementary District	\$774,301.64
4374	080209000	Littlefield Unified District	\$118,522.28
4278	070465000	Littleton Elementary District	\$961,634.47
4270	070438000	Madison Elementary District	\$508,721.86
91935	078219000	Madison Highland Prep	\$115,512.05
4199	030310000	Maine Consolidated School District	\$50,000.00
4439	110208000	Mammoth-San Manuel Unified District	\$242,359.63
4404	100206000	Marana Unified District	\$1,151,547.40
4314	078647000	Maricopa County Community College District dba Gateway Early	\$97,034.89
4234	070199000	Maricopa County Regional District	\$287,899.24
4441	110220000	Maricopa Unified School District	\$1,113,951.67
4435	110100000	Mary C O'Brien Accommodation District	\$72,126.91
90861	078592000	Maryvale Preparatory Academy	\$144,001.53
79499	088759000	Masada Charter School Inc.	\$161,595.86
89852	108798000	Math and Science Success Academy Inc.	\$244,999.88
4473	130243000	Mayer Unified School District	\$238,050.06
81174	078743000	MCCCD on behalf of Phoenix College Preparatory Academy	\$58,957.61
4163	010323000	McNary Elementary District	\$72,029.66
4181	020355000	McNeal Elementary District	\$50,000.00
4235	070204000	Mesa Unified District	\$17,062,873.58
4463	128703000	Mexicayotl Academy Inc.	\$93,613.86
4211	040240000	Miami Unified District	\$485,730.61
79994	078976000	Midtown Primary School	\$50,727.77
4493	138712000	Mingus Springs Charter School	\$50,000.00
4488	130504000	Mingus Union High School District	\$168,269.47
85516	088703000	Mohave Accelerated Elementary School, Inc.	\$143,495.61
79498	088758000	Mohave Accelerated Learning Center	\$125,302.88
4379	080416000	Mohave Valley Elementary District	\$332,857.19
4503	140417000	Mohawk Valley Elementary District	\$50,000.00
80011	078977000	Montessori Academy, Inc.	\$50,000.00
4359	078758000	Montessori Day Public Schools Chartered Inc.	\$50,000.00
4230	060218000	Morenci Unified District	\$56,393.40

CARES Act – Education Stabilization Funds



90192	078556000	Morrison Education Group Inc.	\$202,556.04
4251	070375000	Morristown Elementary District	\$50,000.00
78873	138768000	Mountain Oak Charter School Inc.	\$50,000.00
4265	070421000	Murphy Elementary District	\$1,169,915.43
4176	020323000	Naco Elementary District	\$120,163.60
4252	070381000	Nadaburg Unified School District	\$182,623.62
1000165	078617000	New Horizon High School, Inc. d.b.a. Providence High School	\$50,000.00
4366	078771000	New Horizon School for the Performing Arts	\$68,698.03
78882	078760000	New World Educational Center	\$72,441.11
10760	078930000	Noah Webster Schools-Mesa	\$218,501.75
92374	078261000	Noah Webster Schools-Pima	\$115,121.79
4457	120201000	Nogales Unified District	\$1,864,660.69
90879	078584000	North Phoenix Preparatory Academy	\$50,000.00
79701	078945000	North Star Charter School Inc.	\$50,000.00
79881	108707000	Nosotros Inc	\$98,033.81
79503	028751000	Omega Alpha Academy	\$146,601.68
91238	108512000	Open Doors Community School Inc.	\$50,000.00
4444	110302000	Oracle Elementary District	\$116,235.52
4262	070408000	Osborn Elementary District	\$1,249,531.15
6235	078907000	P.L.C. Charter Schools	\$441,384.81
79068	138758000	PACE Preparatory Academy, Inc.	\$50,000.00
4196	030208000	Page Unified District	\$497,728.42
79086	038753000	Painted Desert Demonstration Projects Inc.	\$50,000.00
123733	078278000	Painted Desert Montessori Academy	\$58,852.44
10967	138756000	Painted Pony Ranch Charter School	\$50,000.00
4275	070449000	Palo Verde Elementary District	\$82,054.40
4255	070394000	Paloma School District	\$50,000.00
4180	020349000	Palominas Elementary District	\$221,996.47
79578	078940000	Pan-American Elementary Charter	\$258,175.32
4241	070269000	Paradise Valley Unified District	\$4,513,659.06
5180	078912000	Paragon Management Inc.	\$141,515.52
79205	078905000	Paramount Education Studies Inc	\$81,582.00
10970	138755000	Park View School Inc.	\$50,000.00
4510	150227000	Parker Unified School District	\$644,711.43
79953	078963000	PAS Charter Inc. dba Intelli-School	\$50,000.00
4460	120406000	Patagonia Elementary District	\$50,000.00
4462	120520000	Patagonia Union High School District	\$50,000.00
79024	078792000	Pathfinder Charter School Foundation	\$231,421.29
4209	040210000	Payson Unified District	\$459,070.67
4369	080208000	Peach Springs Unified District	\$86,610.72
79866	038702000	PEAK School Inc. The	\$67,957.91

CARES Act – Education Stabilization Funds



4186	020422000	Pearce Elementary District	\$50,000.00
4283	070492000	Pendergast Elementary District	\$2,051,218.76
92972	078238000	Pensar Academy	\$50,000.00
4237	070211000	Peoria Unified School District	\$4,230,397.55
4338	078714000	Phoenix Advantage Charter School Inc.	\$165,535.10
4256	070401000	Phoenix Elementary District	\$4,420,353.51
903484	078693000	Phoenix International Academy	\$74,513.59
6379	078776000	Phoenix School of Academic Excellence The	\$50,000.00
4286	070510000	Phoenix Union High School District	\$11,993,688.79
4452	110433000	Picacho Elementary District	\$50,000.00
4420	108601000	Pima County Board of Supervisors	\$50,000.00
90536	108507000	Pima Prevention Partnership	\$66,515.45
89864	108799000	Pima Prevention Partnership dba Pima Partnership Academy	\$50,000.00
79959	108711000	Pima Prevention Partnership dba Pima Partnership School The	\$87,556.58
4220	050206000	Pima Unified District	\$177,339.13
4201	038706000	Pine Forest Education Association Inc.	\$50,000.00
4214	040312000	Pine Strawberry Elementary District	\$50,000.00
4390	090204000	Pinon Unified District	\$769,389.04
4188	020364000	Pomerene Elementary District	\$50,000.00
4431	108744000	Portable Practical Educational Preparation Inc. (PPEP Inc.	\$239,081.79
87405	108796000	Portable Practical Educational Preparation, Inc. (AVA)	\$903,362.26
79569	078939000	Premier Charter High School	\$70,077.36
4466	130201000	Prescott Unified District	\$480,769.29
88317	078516000	Prescott Valley Charter School	\$78,761.59
4425	108778000	Presidio School	\$140,471.04
4511	150404000	Quartzsite Elementary District	\$55,235.80
4245	070295000	Queen Creek Unified District	\$566,259.29
4438	110203000	Ray Unified District	\$150,813.62
4159	010227000	Red Mesa Unified District	\$846,486.91
4447	110405000	Red Rock Elementary District	\$75,162.90
90275	078560000	Research Based Education Corporation	\$54,949.16
4301	078609000	Ridgeline Academy, Inc.	\$50,000.00
4257	070402000	Riverside Elementary District	\$283,866.57
4279	070466000	Roosevelt Elementary District	\$4,701,263.40
87399	078508000	Rosefield Charter Elementary School, Inc.	\$81,120.14
4155	010210000	Round Valley Unified District	\$304,980.07
81033	078735000	RSD Charter School Inc.	\$50,000.00
4449	110418000	Sacaton Elementary District	\$935,766.26
4254	070290000	Saddle Mountain Unified School District	\$218,278.15
4218	050201000	Safford Unified District	\$590,317.27
89414	078688000	Sage Academy, Inc.	\$52,288.84

CARES Act – Education Stabilization Funds



4411	100230000	Sahuarita Unified District	\$362,869.51
4514	150430000	Salome Consolidated Elementary District	\$74,291.84
4320	078656000	Salt River Pima-Maricopa Community Schools	\$68,277.20
4210	040220000	San Carlos Unified District	\$603,652.41
4172	020218000	San Simon Unified District	\$50,000.00
89798	078539000	San Tan Montessori School Inc.	\$54,363.07
4156	010218000	Sanders Unified District	\$641,739.14
4459	120328000	Santa Cruz Elementary District	\$86,489.49
79066	128726000	Santa Cruz Valley Opportunities in Education, Inc.	\$50,000.00
4458	120235000	Santa Cruz Valley Unified District	\$694,932.19
4454	110540000	Santa Cruz Valley Union High School District	\$155,268.49
79951	078962000	SC Jensen Corporation Inc. dba Intelli-School	\$50,000.00
4240	070248000	Scottsdale Unified District	\$2,039,036.15
4492	138708000	Sedona Charter School Inc.	\$50,000.00
4467	130209000	Sedona-Oak Creek JUSD #9	\$137,651.05
92381	078256000	Self Development Academy-Phoenix	\$122,690.58
308420	078695000	Self Development Scottsdale Academy	\$50,000.00
4472	130240000	Seligman Unified District	\$50,000.00
6353	098746000	Shonto Governing Board of Education, Inc.	\$50,000.00
4393	090210000	Show Low Unified District	\$633,391.14
4175	020268000	Sierra Vista Unified District	\$1,446,034.29
4478	130315000	Skull Valley Elementary District	\$50,000.00
90329	078566000	Skyline Gila River Schools LLC	\$65,557.91
79084	078914000	Skyline Schools Inc.	\$58,533.11
4496	138752000	Skyview School Inc.	\$50,000.00
4391	090205000	Snowflake Unified District	\$464,172.40
4222	050305000	Solomon Elementary District	\$73,220.40
1000160	078622000	Somerset Academy Arizona, Inc.	\$50,000.00
4500	140411000	Somerton Elementary District	\$904,797.15
4461	120425000	Sonoita Elementary District	\$50,000.00
89915	108503000	Sonoran Science Academy - Broadway	\$81,329.23
90284	108504000	Sonoran Science Academy - Davis Monthan	\$50,000.00
91108	078599000	South Phoenix Academy Inc.	\$114,341.26
90540	078578000	South Valley Academy Inc.	\$95,608.45
79085	108779000	Southgate Academy, Inc.	\$289,198.59
92043	078228000	Southwest Leadership Academy	\$90,144.72
4173	020221000	St. David Unified District	\$55,036.51
4153	010201000	St. Johns Unified District	\$196,523.06
4451	110424000	Stanfield Elementary District	\$133,820.11
4313	078634000	STEP UP Schools, Inc.	\$50,000.00
91992	108227000	Strengthbuilding Partners	\$50,000.00

CARES Act – Education Stabilization Funds



79453	078924000	Success School	\$238,816.48
4407	100212000	Sunnyside Unified District	\$5,721,902.88
4440	110215000	Superior Unified School District	\$143,805.10
92981	078237000	Synergy Public Schools, Inc.	\$147,161.06
4408	100213000	Tanque Verde Unified District	\$75,949.69
79218	088702000	Telesis Center for Learning Inc.	\$95,658.09
4258	070403000	Tempe School District	\$2,599,800.98
4287	070513000	Tempe Union High School District	\$1,057,139.15
4219	050204000	Thatcher Unified District	\$232,593.70
6355	108722000	The Charter Foundation Inc.	\$295,325.59
92978	118717000	The Grande Innovation Academy	\$119,740.69
91250	078206000	The Paideia Academies Inc	\$228,041.92
92976	078411000	Think Through Academy	\$50,000.00
4264	070417000	Tolleson Elementary District	\$608,264.76
4288	070514000	Tolleson Union High School District	\$1,839,218.99
4450	110422000	Toltec Elementary District	\$282,376.92
4168	020201000	Tombstone Unified District	\$238,267.88
4215	040333000	Tonto Basin Elementary District	\$50,000.00
4376	080412000	Topock Elementary District	\$50,000.00
4225	058702000	Triumphant Learning Center	\$50,000.00
90859	078591000	Trivium Preparatory Academy	\$50,000.00
4197	030215000	Tuba City Unified District	\$985,824.99
79979	108714000	Tucson International Academy Inc.	\$214,124.46
6374	108768000	Tucson Preparatory School	\$50,000.00
4403	100201000	Tucson Unified District	\$18,558,099.29
4422	108660000	Tucson Youth Development/ACE Charter High School	\$97,540.64
4277	070462000	Union Elementary District	\$418,662.92
4413	100220000	Vail Unified District	\$428,988.67
4190	020522000	Valley Union High School District	\$50,000.00
90317	078562000	Vector School District Inc.	\$82,729.65
80992	078984000	Veritas Preparatory Academy	\$50,000.00
4162	010309000	Vernon Elementary District	\$76,829.67
92985	078410000	Victory Collegiate Academy Corporation	\$76,095.11
91948	078224000	Vista College Preparatory, Inc.	\$319,483.74
4260	070406000	Washington Elementary School District	\$7,318,952.59
4504	140424000	Wellton Elementary District	\$90,277.88
4512	150419000	Wenden Elementary District	\$54,766.70
79497	078935000	West Gilbert Charter Elementary School Inc.	\$52,057.30
79990	078974000	West Gilbert Charter Middle School Inc.	\$50,000.00
90036	078548000	West Valley Arts and Technology Academy Inc.	\$121,853.99
91937	078221000	Western School of Science and Technology, Inc.	\$166,246.74

CARES Act – Education Stabilization Funds



4394	090220000	Whiteriver Unified District	\$1,320,524.94
4236	070209000	Wickenburg Unified District	\$259,063.82
4170	020213000	Willcox Unified District	\$290,975.19
4193	030202000	Williams Unified District	\$202,784.25
4261	070407000	Wilson Elementary District	\$430,639.85
4154	010208000	Window Rock Unified District	\$988,514.92
4387	090201000	Winslow Unified District	\$709,358.78
4485	130352000	Yarnell Elementary District	\$50,000.00
4213	040305000	Young Elementary District	\$50,000.00
4385	088755000	Young Scholars Academy Charter School Corp.	\$95,715.33
4499	140401000	Yuma Elementary District	\$1,987,817.13
4507	140570000	Yuma Union High School District	\$2,556,671.32



Equitable Services

The CARES Act requires school districts (**these requirements do not apply to charter LEAs**) receiving ESSER (and GEER, as applicable) Funds to provide equitable services to non-profit private schools **in the same manner as provided under ESEA Section 1117 (Title I-A)**:

ASSISTANCE TO NON-PUBLIC SCHOOLS SEC. 18005.

- (a) **IN GENERAL.** A local educational agency receiving funds under sections 18002 or 18003 of this title shall provide equitable services in the same manner as provided under section 1117 of the ESEA of 1965 to students and teachers in non-public schools, as determined in consultation with representatives of non-public schools.
- (b) **PUBLIC CONTROL OF FUNDS.** The control of funds for the services and assistance provided to a nonpublic school under subsection (a), and title to materials, equipment, and property purchased with such funds, shall be in a public agency, and a public agency shall administer such funds, materials, equipment, and property and shall provide such services (or may contract for the provision of such services with a public or private entity).

Who is required to provide equitable services?

School districts receiving either ESSER or GEER Fund LEA assistance grants are required to provide equitable services to non-profit private schools within their district’s boundaries. Just as under ESSA programs, Charter LEAs, and other non-traditional district LEAs, are not required to provide equitable services.

How do you determine if a private school is eligible for equitable services?

A private school is eligible to choose to participate in ESSER Fund equitable services if they are currently eligible to participate in Title I-A equitable services from a school district.

Note, private schools that may have declined to participate in equitable services under Title I-A may choose to now participate under the ESSER Fund. Districts cannot only choose to reach out to private schools that have already chosen to participate in equitable services for other FY20 or FY21 ESSA programs, such as Title I or Title II. There may be private schools that will only choose to participate in ESSER Fund equitable services.

The *FY21 Affirmation of Timely/Meaningful Ongoing Consultation and Equitable Services* for the ESSER Fund is included in the Appendix. This form must be completed for all eligible private schools for a district, just as required under Title I-A, and must be uploaded to the Grants Management system as a required document as part of the LEA grant application process. Affirmation of Consultations for private school equitable services must be completed and submitted for LEA ESSER Fund grant applications to be approved.

Districts must make a minimum of three documented good-faith efforts to determine the participation status of a private school. If a private school has not responded after three documented good-faith efforts, then they may be reported by the district as a non-participating private school.



Do private schools need to have participated in FY20 Title I equitable services to be considered eligible for ESSER Fund equitable services?

No. All private schools eligible to participate in Title I equitable services in FY21 may choose to participate in ESSER Fund equitable services.

Who is eligible to receive equitable services?

All students and teachers in a participating non-profit private school are eligible to receive equitable services under the ESSER Fund.

What types of services are private schools eligible to receive?

Participating private schools may participate in any services aligned with any ESSER Fund allowable activity, as determined through **timely and meaningful consultation**.

How is the scope of equitable services that a private school can receive determined? Is consultation required?

School districts receiving ESSER and/or GEER Funds are required to engage in **timely and meaningful consultation** non-profit private schools, just as required under Title I-A. The expected outcome of this consultation is the determination of the scope and delivery of equitable services to be provided by the district.

The ADE **Ombudsman** for equitable services (PrivateSchoolsOmbud@azed.gov) is available as a resource, as needed, throughout the process of determining and delivering equitable services under the ESSER Fund, in the same manner as provided under Title I-A. Additional resources and support materials may be found on the ADE website for [Private School Equitable Services](#).

What are the requirements for equitable services?

LEAs must make the following assurances in order to receive ESSER Fund grants:

Assistance to Non-Public Schools

LEAs must provide equitable services in the same manner as required under Title I-A (ESEA Sec.1117). A **proportionate share** of funds to support equitable services must be calculated, and **timely and meaningful consultation** with non-public schools must be completed

Public Control of Funds

Just as required under Title I-A, LEAs must maintain control of all ESSER Funds for services and assistance provided to non-public schools associated with the provision of equitable services LEAs providing equitable services to non-public schools must:

- Maintain control of funds for the services and assistance provided to a non-public school under the ESSER Fund
- Maintain title to materials, equipment, and property purchased with ESSER funds
- Ensure that services to a non-public school with ESSER funds will be provided by a public agency directly, or through contract with, another public or private entity

How is proportionate share determined?

A district determines the proportional share of ESSER (and GEER, as applicable) Funds available for equitable services as follows:

- Determine the LEA and Private Schools' proportionate share from the LEA's **FY20 Title I Proportionate Share Determination**. This excel file may be found in the FY20 ESEA Consolidation Application as a Title I Related Document
- Apply these proportions to the LEA's total ESSER Fund allocation to determine the amount of funds available for equitable services
- Reserve from this amount funds that are reasonable and necessary for the district to administer equitable services

How are participating private school budgets for equitable services determined?

A district determines the budget available for equitable services at each participating private school as follows:

- Determine the final cohort of participating private schools for ESSER Fund equitable services
- Determine the total number of eligible Private School children from **low- income families residing in the LEA's Title I Attendance Zones** attending ESSER Fund Participating Private Schools. These data will be available to FY21 Title I-A LEAs, as they were gathered as part of the annual Title I-A consultation process
- Determine final PPA for participating private schools:
Total Amount Available for Equitable Services – Amount Reserved for Administration /
Total Eligible Private School Students from Participating Private Schools
- Apply the final PPA to the total eligible private school student count for each participating private school to determine final budgets for equitable services for each participating private school



Example of Determining the Proportionate Share of ESSER Funds Equitable Services

In this example, a district has received **\$1,000,000** in ESSER Funds

The district has referred to their **FY20 ESEA Consolidated Application** under **Title I Related Documents** to review the district’s **FY20 Title I Proportionate Share Determination** (Excel file) to determine the proportions to use to determine the proportionate share of funds to reserve for ESSER Fund equitable services:

Step 1
EXAMPLE OF DETERMINING THE PROPORTIONATE SHARE OF ESSER FUNDS FOR EQUITABLE SERVICES
**Data from FY20 ESEA Consolidated Application Related Document (Excel file):
 FY20 Title I Proportionate Share Determination*

	LEA Proportionate Share*	Private Schools' Proportionate Share*	Total
Proportion	90%	10%	100%
Proportional Share ESSER Fund	\$900,000	\$100,000	\$1,000,000

Step 2
EXAMPLE OF DETERMINING THE AMOUNT OF FUNDS RESERVED FOR DISTRICT ADMINISTRATION OF EQUITABLE SERVICES

Total determined proportionate share for ESSER Fund equitable services	\$100,000
After consultation, the amount reserved that is reasonable and necessary for the district to administer ESSER Fund equitable services	\$10,000
Final amount available for ESSER Fund equitable services	\$90,000 (\$100,000 - \$10,000)

CARES Act – Education Stabilization Funds



The district has determined their final participating private school cohort of 3 schools after completing timely and meaningful consultation with all eligible private schools. These schools have a total of 150 eligible Private School children from low- income families residing in the LEA's Title I Attendance Zones.

The district has determined the final per-pupil amount (PPA) of \$600 by dividing the total final amount available for ESSER Fund equitable services (\$90,000) by the final total eligible student count (150).

The district has applied their final PPA to the total eligible student count of each participating private school to determine the amount available to provide equitable services in each participating private school:

Step 3			
EXAMPLE OF DETERMINING THE AMOUNT OF FUNDS AVAILABLE FOR ESSER FUND EQUITABLE SERVICES IN SPECIFIC PARTICIPATING PRIVATE SCHOOLS			
Private School	Total number of eligible Private School children from low- income families residing in the LEA's Title I Attendance Zones	Per-pupil amount (PPA) generated by each eligible private school student ($\$90,000 / 150$)	Amount available for ESSER Fund equitable services in each private school (number of students x PPA)
A	75	\$600	\$45,000
B	50	\$600	\$30,000
C	25	\$600	\$15,000
TOTAL	150	\$600	\$90,000

Please contact ESSER@azed.gov for additional questions regarding equitable services requirements



CARES Act Waivers

Under the CARES Act, the U.S. Secretary of Education has increased authority to provide education waivers related to assessments, accountability, and reporting requirements

Arizona has submitted and received approval for two waivers:

Assessment and Accountability Waiver

The following are now waived for ADE for SY19-20:

- Statewide assessment requirements
- Requirements that a state identify new schools for comprehensive and targeted support and improvement and additional targeted support and improvement (CSI and TSI) based on SY19-20 data, and freezes the current list of identified schools for SY20-21
- Report card provisions related to certain assessments and accountability

Fiscal Waiver

ADE will now be able to do the following:

- Approve LEAs to carryover more than 15% of FY20 Title I-A funds even if the LEA received approval to exceed this limitation in the past three years
- Extend the period of availability of FY19 funds to September 30, 2021 for the following ESSA grant programs:
Title I-A, I-B (State Assessment), I-C (Migrant), I-D (State Agency), II-A, III-A (EL), IV-A (Student Support and Academic Enrichment), IV-B (21st Century Community Learning Centers), V-B (RLIS), McKinney-Vento (Homeless)
- Permit LEAs to use their **FY20 Title IV-A funds** to best meet local needs through waiving content-area minimum expenditure requirements (for LEAs receiving more than \$30,000) and the 15% limit on technology-related purchases
- **Waive the ESSA definition of professional development for SY19-20**
ADE and LEAs may use FY20 ESSA funds to conduct time-sensitive, one-time, or stand-alone professional development



ADE CARES Act Fiscal Waiver Frequently Asked Questions

Does this waiver also apply to FY21?

No, the waiver only applies to FY20.

Will I have to apply for the 15% Carryover for FY20?

No, this fiscal waiver allows the SEA to approve the carryover of LEA funds for all Title I-A funds awarded in FY20 to FY21. There will be no requirement for LEAs to request this carryover waiver. It will happen automatically following the submission and approval of the FY20 Title I-A Completion Report. Please note, an LEA must have an approved FY21 Title I-A grant for FY20 funds to be carried over.

Will my LEA still be eligible if I have used the 15% carryover provision within the last three years?

Yes, this waiver will allow ALL LEAs to carryover funds from FY20 to FY21 due to the unique circumstances of COVID 19, regardless of whether a carryover waiver was requested within the last three years.

What does the period of availability waiver mean to the LEA?

The waiver extends the period of availability of FY19 ESSA funds to September 30, 2021. This waiver allows FY19 SEA funds and LEA carryover funds to be leveraged for a longer period of time, rather than having to return to them Federal Government on September 30, 2020, as would otherwise be required.

How does the waiver apply to Title IV-A?

The waiver now allows LEAs to use their FY20 Title IV-A funds to best meet local needs through waiving content-area minimum expenditure requirements (for LEAs receiving more than \$30,000) and the 15% limit on technology-related purchases. A revision to your FY20 application will need to be submitted and approved to take advantage of this new flexibility. As a reminder, the project period for FY20 Title IV-A ends on September 30, 2020.

Since ‘needs Assessment requirements’ is checked under Title IV-A, does that mean the Comprehensive Needs Assessment is no longer a requirement?

No, this only removes the requirement for FY20 Title IV-A for the remainder of the 2019-20 school year. LEAs already completed a Comprehensive Needs Assessment process for FY20. This waiver removes the requirement for LEAs to re-do the needs assessment for the specific purpose of leveraging expanded Title IV-A flexibility through submitting a revision to a FY20 Title IV-A grant application. As a reminder, the project period for FY20 Title IV-A ends on September 30, 2020. The Comprehensive Needs Assessment (CNA), root cause analysis (RCA), and Integrated Action Plan (IAP) remain required for FY21.

What does the change in the definition of ‘professional development’ for SY19-20 mean?

ESSA changed the definition of professional development for most ESSA programs to reflect activities that are, in part, “sustained, (not stand-alone, 1-day, or short-term workshop)”. The waiver allows both ADE and LEAs to now conduct time-sensitive, one-time, or stand-alone professional development designed to meet immediate needs and contexts given COVID-19, such as PD focused on supporting educators providing distance learning. The waiver applies to all ESSA covered programs that reference the ESSA definition of professional development.



Repurposing Federal Equipment and Supplies to Combat COVID-19

Generally, equipment and supplies purchased with Federal funds may only be used to carry out the purposes of the Federal program for which they were purchased and for intended Beneficiaries (2 C.F.R. § 200.403(a)).

ED has released guidance ([Fact Sheet for Repurposing Federal Equipment and Supplies to Combat COVID-19](#)) that allows grantees and subgrantees to **repurpose** federally purchased equipment and supplies that are **not currently in use to carry out a Department grant program** to meet the general education needs of students, including students with disabilities and English learners, and the instructional needs of teachers, related services providers, and other educational personnel **during the national emergency caused by COVID-19**.

When the national emergency ends, schools reopen, and students once again begin attending schools in person, the equipment and supplies that are not consumed **must be returned** for use in the Department grant programs for which they were purchased.

To take advantage of this flexibility, grantees and subgrantees must **clearly mark the equipment and supplies being repurposed** with pertinent identifying information. In addition, grantees and subgrantees must **maintain an inventory of the equipment and supplies being repurposed** to facilitate proper return, including the following:

- a **description and itemization** of the type of equipment or supplies being temporarily repurposed
- the **source (Federal program(s) funds** involved) from which the temporarily repurposed equipment or supplies were purchased and the amount of Federal funds used for the purchase
- **where the equipment or supplies are assigned** for use during the duration of the COVID-19 national emergency
- the **date on which the equipment or non-consumed supplies are returned** for Federal program purposes

Grantees must **maintain these records for a minimum of 3 years** and until the resolution of any audit, monitoring, or oversight that is being conducted relative to the repurposed equipment or supplies, as required by 2 C.F.R. §§ 200.302 (financial management) and 200.333 (retention requirements for records).

Equipment and non-consumable supplies that are **lost or damaged must be replaced with non-Federal funds** to ensure continued benefit to the Department grant program.

Please Note: This authority **does not permit** grantees and subgrantees to **use unobligated grant funds to purchase new equipment and supplies** for purposes **not aligned with the allowable activities** of the program under which funds are available.

Grantees should not assume additional funds will be available should the repurposing of equipment and supplies result in any type of shortage to a program.



ESSA Existing Transferability Flexibility

LEAs may choose to transfer funds received under **Title II-A** and **Title IV-A** to any of these ESSA programs (if they have an allocation under these programs):

<p>Title I-A Title I-C: Migrant Title I-D: Neglected and Delinquent Title II-A</p>	<p>Title III-A: English Learners Title IV-A: Student Support and Academic Enrichment Title V-B: Rural, Low-Income Schools (RLIS)</p>
---	---

Districts must engage in **timely and meaningful consultation** for the **impact on the provision of equitable services** with private school officials.

Funds that are transferred **lose their source identity** and **become the destination funds**, and **all the requirements of the destination fund apply** – to include the provision of equitable services.

Once funds are transferred, **they cannot be transferred back**.

Please contact your Title I/II and Title IV-A Specialist(s) for additional guidance on the process to use this flexibility.

Please also refer to the US Department of Education’s [Fact Sheet for Transferring State-and Local-Level Funds \(Section 5103 of the ESEA\)](#) for additional information.



Appendices

- **FY21 Affirmation of Timely/Meaningful Ongoing Consultation and Equitable Services**
- **CARES ACT: *ELEMENTARY AND SECONDARY SCHOOL EMERGENCY RELIEF FUND***

FY21 Affirmation of Timely/Meaningful Ongoing Consultation and Equitable Services
CARES Act Elementary and Secondary School Emergency Relief Fund (ESSER) Fund (Section 18005)
Elementary and Secondary Education Act- P.L. 107 – 110 ~ SECTION 1117

Local Education Agency (LEA) _____
 LEA Federal Program Official _____
 LEA Federal Program Contact Phone: _____ Email: _____

Private School Name _____
 Private School Address _____
 In District *or* Out of District _____
 Private School Official _____
 Private School Contact Phone: _____ Email: _____

LEA Federal Program Official: Select what is applicable from the following statements. LEAs might check more than one.

- Check if LEA has students residing within the LEA and are providing services to students attending a private school **inside** LEA boundaries
- Check if LEA has students residing within the LEA but are providing services to students attending a private school **outside** of LEA boundaries
- Check if the private school has not responded to LEA’s repeated, good-faith attempts (3) for consultation

Private School Official: Complete the following showing private school participation:

LEA Providing ESSER Fund Equitable Services (Section 18005)	
Yes <input type="checkbox"/>	No <input type="checkbox"/>

Directions: Both school officials (private and public) must initial under either YES or NO for each statement below. Both School Officials will initial, sign, and date this document following the ongoing consultation AND the equitable services implementation. Comments may be made in the Comments section.

Upload to Related Documents under the Elementary and Secondary School Emergency Relief ESSER) Fund Grant.

Part 1: Timely and Meaningful Consultation Affirmation – Initial and/or Ongoing Consultation

Note: *Affirmation of Consultations for private school equitable services must be completed and submitted for LEA ESSER Fund Grant applications to be approved*

Official	Yes	No	Consultation Requirements (ESEA Section 1117, CARES Act Section 18005)
Private School			Timely and meaningful consultation occurred regarding the needs and services of eligible children and their teachers and families. Consultation Dates: _____
Public School			
Private School			The LEA gave due consideration to the views of the private school official.
Public School			
Private School			The program design/provision of services agreed upon by the LEA and private school is equitable. Date services are to begin: _____
Public School			

Signature of Public-School Official _____ Date: _____

Signature of Private School Official _____ Date: _____

Part 2: Equitable Provision of Services - (If equitable services were provided in FY21, the due date for Part 2 is upon submittal of FY21 Completion Report. Upload to CR Related Documents.)

Official	Yes	No	Consultation Requirements (ESEA Section 1117, CARES Act Section 18005)
Private School			Services began as agreed between the LEA and private school during consultation. Date services began: _____
Public School			
Private School			The LEA gave due consideration to the views of the private school official during ongoing consultation.
Public School			
Private School			Satisfactory services were provided during the school year.
Public School			

Signature of Public-School Official _____ Date: _____

Signature of Private School Official _____ Date: _____

Comments:

Education Stabilization Fund

\$30,750,000,000, to remain available through September 30, 2021, to prevent, prepare for, and respond to coronavirus, domestically or internationally

Elementary and Secondary School Emergency Relief Fund

\$13,229,265,000

Sec. 18003

https://www.appropriations.senate.gov/imo/media/doc/DIVB_EMSU.pdf

- (a) **GRANTS.** From funds reserved under section 18001(b)(2) of this title, the Secretary shall make elementary and secondary school emergency relief grants to each State educational agency with an approved application. The Secretary shall issue a notice inviting applications not later than 30 days of enactment of this Act and approve or deny applications not later than 30 days after receipt.
- (b) **ALLOCATIONS TO STATES.** The amount of each grant under subsection (a) shall be allocated by the Secretary to each State in the same proportion as each State received under part A of title I of the ESEA of 1965 in the most recent fiscal year.
- (c) **SUBGRANTS TO LOCAL EDUCATIONAL AGENCIES.** Each State shall allocate **not less than 90 percent** of the grant funds awarded to the State under this section as subgrants to local educational agencies (including charter schools that are local educational agencies) in the State in proportion to the amount of funds such local educational agencies and charter schools that are local educational agencies received under part A of title I of the ESEA of 1965 in the most recent fiscal year.
- (d) **USES OF FUNDS.** A local educational agency that receives funds under this title may use the funds for any of the following:
- (1) **Any activity authorized by the ESEA of 1965**, including the **Native Hawaiian Education Act and the Alaska Native Educational Equity, Support, and Assistance Act** (20 U.S.C. 6301 et seq.), the **Individuals with Disabilities Education Act** (20 U.S.C. 1400 et seq.) (“IDEA”), the **Adult Education and Family Literacy Act** (20 U.S.C. 1400 et seq.), the **Carl D. Perkins Career and Technical Education Act of 2006** (20 U.S.C. 2301 et seq.) (“the Perkins Act”), or subtitle B of title VII of the **McKinney Vento Homeless Assistance Act** (42 U.S.C. 11431 et 2 seq.).
 - (2) Coordination of preparedness and response efforts of local educational agencies with State, local, Tribal, and territorial public health departments, and other relevant agencies, to improve coordinated responses among such entities to prevent, prepare for, and respond to coronavirus.
 - (3) Providing principals and others school leaders with the resources necessary to address the needs of their individual schools.
 - (4) Activities to address the unique needs of low-income children or students, children with disabilities, English learners, racial and ethnic minorities, students experiencing

homelessness, and foster care youth, including how outreach and service delivery will meet the needs of each population.

- (5) Developing and implementing procedures and systems to improve the preparedness and response efforts of local educational agencies.
 - (6) Training and professional development for staff of the local educational agency on sanitation and minimizing the spread of infectious diseases.
 - (7) Purchasing supplies to sanitize and clean the facilities of a local educational agency, including buildings operated by such agency.
 - (8) Planning for and coordinating during long term closures, including for how to provide meals to eligible students, how to provide technology for online learning to all students, how to provide guidance for carrying out requirements under the Individuals with Disabilities Education Act (20 U.S.C. 1401 et seq.) and how to ensure other educational services can continue to be provided consistent with all Federal, State, and local requirements.
 - (9) Purchasing educational technology (including hardware, software, and connectivity) for students who are served by the local educational agency that aids in regular and substantive educational interaction between students and their classroom instructors, including low-income students and students with disabilities, which may include assistive technology or adaptive equipment.
 - (10) Providing mental health services and supports.
 - (11) Planning and implementing activities related to summer learning and supplemental after school programs, including providing classroom instruction or online learning during the summer months and addressing the needs of low-income students, students with disabilities, English learners, migrant students, students experiencing homelessness, and children in foster care.
 - (12) Other activities that are necessary to maintain the operation of and continuity of services in local educational agencies and continuing to employ existing staff of the local educational agency.
- (e) **STATE FUNDING.**—With funds not otherwise allocated under subsection (c), a State may reserve not more than **1/2 of 1 percent for administrative costs** and the **remainder for emergency needs as determined by the state educational agency** to address issues responding to coronavirus, which may be addressed through the use of grants or contracts.
- (f) **REALLOCATION.**—A State shall return to the Secretary any funds received under this section that the State does not award within 1 year of receiving such funds and the Secretary shall reallocate such funds to the remaining States in accordance with subsection (b).

ASSISTANCE TO NON-PUBLIC SCHOOLS

SEC. 18005.

- (a) **IN GENERAL.** A local educational agency receiving funds under sections 18002 or **18003** of this title shall **provide equitable services** in the same manner as provided under **section 1117** of the ESEA of 1965 to students and teachers in non-public schools, as determined in consultation with representatives of non-public schools.
- (b) **PUBLIC CONTROL OF FUNDS.** The control of funds for the services and assistance provided to a nonpublic school under subsection (a), and title to materials, equipment, and property purchased with such funds, shall be in a public agency, and a public agency shall administer such funds, materials, equipment, and property and shall provide such services (or may contract for the provision of such services with a public or private entity).

CONTINUED PAYMENT TO EMPLOYEES

SEC. 18006. A local educational agency, State, institution of higher education, or other entity that receives funds under “Education Stabilization Fund”, shall to the greatest extent practicable, continue to pay its employees and contractors during the period of any disruptions or closures related to coronavirus.

DEFINITIONS

SEC. 18007. Except as otherwise provided in sections 18001–18006 of this title, as used in such sections—

- (1) the terms “elementary education” and “secondary education” have the meaning given such terms under State law;
- (2) the term “institution of higher education” has the meaning given such term in title I of the Higher Education Act of 1965 (20 U.S.C. 1001 et seq.);
- (3) the term “Secretary” means the Secretary of Education;
- (4) the term “State” means each of the 50 States, the District of Columbia, and the Commonwealth of Puerto Rico;
- (5) the term “cost of attendance” has the meaning given such term in section 472 of the Higher Education Act of 1965.
- (6) the term “Non-public school” means a nonpublic elementary and secondary school that (A) is accredited, licensed, or otherwise operates in accordance with State law; and (B) was in existence prior to the date of the qualifying emergency for which grants are awarded under this section;
- (7) the term “public school” means a public elementary or secondary school; and
- (8) any other term used that is defined in section 8101 of the Elementary and Secondary Education Act of 1965 (20 U.S.C. 7801) shall have the meaning given the term in such section.

MAINTENANCE OF EFFORT

SEC. 18008.

- (a) A State’s application for funds to carry out sections 18002 or 18003 of this title shall include assurances that the State will maintain support for elementary and secondary education, and State support for higher education (which shall include State funding to institutions of higher education and state need-based financial aid, and shall not include support for capital projects or for research and development or tuition and fees paid by students) in fiscal years 2020 and 2021 at least at the levels of such support that is the average of such State’s support for

elementary and secondary education and for higher education provided in the 3 fiscal years preceding the date of enactment of this Act.

- (b) The secretary may waive the requirement in subsection (a) for the purpose of relieving fiscal burdens on States that have experienced a precipitous decline in financial resources.